

# Massachusetts Wildfire Activity Briefing

November 4, 2024, as of 17:00

## Massachusetts DCR Bureau of Forest Fire Control and Forestry

### SYNOPSIS:

Today's cloud cover helped fire resource continue to strength perimeters on all active fires. Middleton Pond fire has set up a sprinkler system in division alpha along Currier Drive and Old Hundred Lane to help decrease smoke impacts and strength the perimeter. Mass National Guard provided One (1) helicopter today to continue work at the Moose Meadow fire. The dropping of fall foliage onto burn areas continues to challenge containment efforts on most fires.

### Ongoing active fire incidents- Extended Operations

- **Cain Hill Fire:** Holding at 140 acres at 70% containment. Special attention to strengthening perimeter in northeast corner adjacent to residential area. Smoldering interior over most of the fire in heavy surface fuels. Producing light smoke locally.
- **Middleton Pond:** 188 acres and 70% contained. DCR Fire crews plumed sprinkler system along Division A to increase protection of homes immediately adjacent to the fire. Continued creeping and surface fire and moderate to heavy smoldering interior. State and local crews engaged.
- **Pappas Fire:** Canton, MA. 33 Acres at 90% containment. Local units continue to patrol and mop-up. Low smoldering activity in the interior with some creeping fire in fresh leaf litter. Local FD monitoring
- **Wolcott Hill:** Milton, MA, Blue Hills Reservation: Remains at 90% containment and 4 acres. Resource did great work with both on the ground water delivery and from the National Guard. State and Local resources are continuing to patrol and monitor.
- **Traders Way:** Salem, MA. 15 Acres at 50% containment. Task force and helicopter used on initial attack. Structures in proximity. Continues to smolder interior producing local smoke conditions. Containment lines are being strengthened. No new activity. Local FD monitoring
- **Old Forest Rd:** North Andover, MA. Located in Boxford State Forest. 5 acres. 50% contained. Crews continue to strength containment lines. No new activity.
- **Bradway:** Monson, MA. Located on Bradway Rd. Mapped at 44 acres, 90% Contained. Crews made great progress again today in securing perimeter today with assistance of forestry task force resources and DCR Fire crews. Heightened dead tree snag issues throughout the burn area. State and local crews engaged.
- **Castle Rock:** Saugus, MA., Breakheart State Reservation. 22 acres mapped, 80% contained. State and local crew actively engaged and around the fire. Fire anchored to existing hardpacked trails and roads.
- **Pond South:** Middleton, MA, 1 mile south of ongoing Middleton Pond fire on south shore of the pond. Estimated at 4 acres, 60% contained. State and local crews around the fire.
- **Fitzgerald:** Northampton, MA. 55 Acres, 85% Contained. Remote fire in conservation area off Coles Meadow Rd. Difficult access. Fire is burning against a wetland marsh with dry shrub and grass fuels. Helicopter air operations continued to improve perimeter control across most of the fire. Heavy smoldering interior. State and local crews around the fire.
- **Moose Meadow:** Montgomery, MA, 60 acres and 60% contained. Located off Pritcher Rd in the watershed area, the fire started overnight from an abandoned campfire along the reservoir and spread moderately toward Pritcher Rd. Growth to the southeast this afternoon. Helicopter air operations used to slow rates of spread toward structures.
- **Howe:** Spencer, MA. in Spencer State Forest. Fire is 9 acres and 80% contained. Burning deep into organic soils. Many resources from local towns with DCR Fire made good progress.
- DCR Fire staff are assisting local fire departments with monitoring on all active incidents. DCR Fire Towers are on full alert and providing some good success at detecting new fire starts quickly, resulting in much quicker dispatching to some fires.

**Fire Weather:** Mostly cloudy conditions today. Highs in upper 50's, Relative Humidity values range from low 40% to 50%, winds light and variable out of the NW at 5mph.

### FIRE STATISTICS:

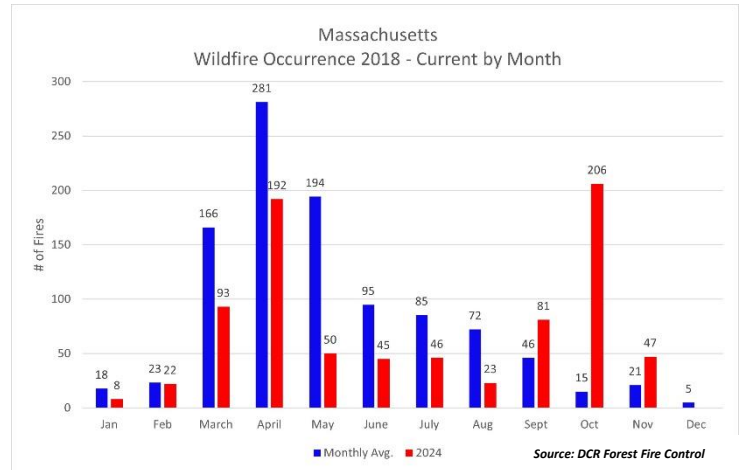
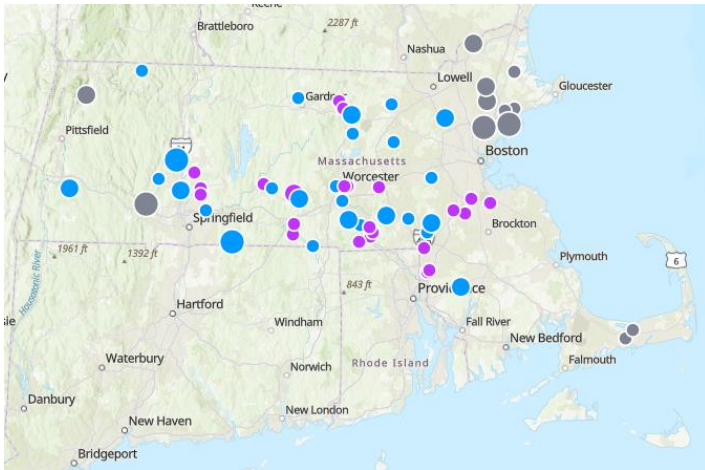
<b>YTD STATE TOTALS:</b>	<b>813 FIRES</b>	<b>1,353 ACRES BURNED</b>
<b>OCTOBER TOTALS:</b>	<b>206 FIRES</b>	<b>623 ACRES BURNED</b>
<b>NOVEMBER TOTALS:</b>	<b>47 FIRES</b>	<b>188 ACRES BURNED</b>
<b>7 DAY TOTALS:</b>	<b>66 FIRES</b>	<b>243 ACRES BURNED</b>
<b>24 HR:</b>	<b>13 FIRES</b>	<b>4 ACRES BURNED (Est.)</b>

## Current Massachusetts Active Wildfire Incidents as of 11/4/24:

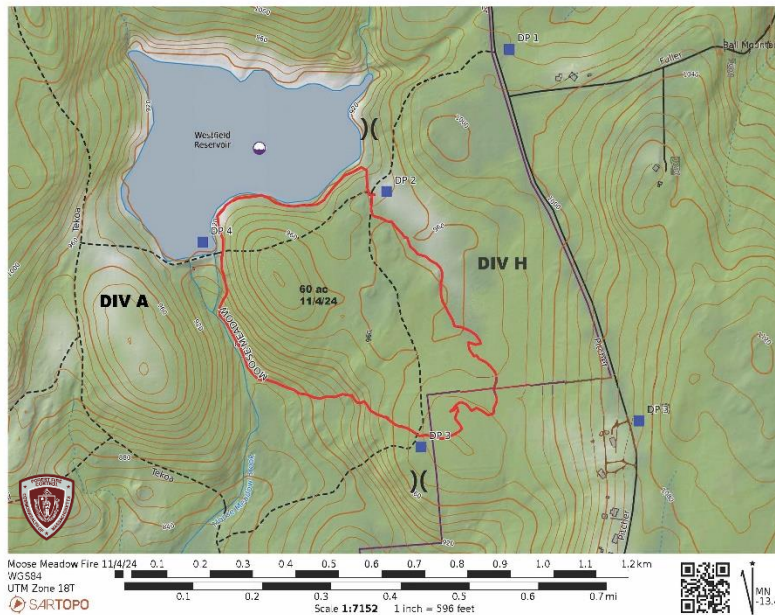
Fire Name	Town	Start Date	Current Size	Est. % Contain.	Command	Ownership	Status	Potential for Growth
Cain Hill	Salem/Lynn	10/26/24	140	70 %	Unified DCR D5/Local IC	Private	Active	Moderate
Holding at 140 acres at 50% containment. Special attention to strengthening perimeter in northeast corner adjacent to residential area. Smoldering interior over most of the fire in heavy surface fuels. Producing light smoke locally.								
Middleton Pond	Middleton	10/27/24	188	70 %	Unified DCR D6/Local IC	Municipal Lynn Woods Res	Active	Moderate
Continued creeping and surface fire and moderate to heavy smoldering interior. State and local crews engaged.								
Pappas	Canton	10/27/24	33	90 %	Canton FD	Private	Patrol/Monitor	Low
Local units continue to patrol and mop-up. Creeping and smoldering in new leaf drop fuels.								
Wolcott Hill	Milton	10/20/24	4	90 %	Unified DCR / Local	State	Patrol/Monitor	Low
Smoldering and creeping fire. Back in monitor and patrol status.								
Curry 24	Devens	10/24/24	100	99%	Unified DCR / Local IC	DOD	Patrol/Monitor	Low
No significant threats to containment reported. DOD Range Control monitoring fire activity.								
Maple Meadow	Wilmington	10/24/24	10	70%	Unified DCR/Local IC	Municipal	Monitor	Low
Little to no activity noted								
Mt. Laurel	Holden	10/23/24	6	95%	Unified Holden / DCR	Private	Patrol/Monitor	Low
Containments lines completed around entire perimeter. Patrolling line.								
Traders Way	Salem	10/29/24	15	50%	Salem FD	Municipal	Mop up	Moderate
Crews working on strengthen containment lines. Adjacent to residential values at risk. Currently creeping and smoldering interior with light to moderate smoke generation locally.								
Old Forest Rd	North Andover	10/29/24	5	30%	Local and DCR	State	Monitor	Moderate
Creeping and smoldering fire interior.								
Boxford State Forest								
Bradway	Monson	10/31/24	44	90%	Monson FD/DCR Unified	Private	Active	Moderate
Crews made great progress again today in securing perimeter today with assistance of forestry task force resources and DCR Fire crews.								
Castle Rock	Saugus	11/1/24	22	80%	Local and DCR	State	Mop up	Moderate
State and local crew actively engaged and around the fire. Fire anchored to existing hardpacked trails and roads. 22 acres mapped, 80% contained.								
Pond South	Middleton	11/1/24	4 est.	60%	Local and DCR	Municipal	Active	Moderate
1 mile south of ongoing Middleton Pond fire on south shore of the pond. Estimated at 4 acres, 60% contained. State and local crews around the fire.								
Fitzgerald	Northampton	11/1/24	55	85 %	Local and DCR	Private	Active	High
Fire is burning against a wetland marsh with dry shrub and grass fuels. Helicopter air operations were very effective today to improve perimeter control across most of the fire. Heavy smoldering interior. Currently 55 Acres, 85% Contained. State and local crews around the fire.								
Moose Meadow	Montgomery	11/2/24	60	60 %	Local and DCR	Municipal	Active	High
Growth to the southeast this afternoon. Helicopter air operations used to slow rates of spread toward structures. Currently estimated at 60 acres and 60% contained. More accurate mapping planned for tomorrow operations.								
Howe	Spencer	11/1/24	9.5	80 %	Local and DCR	State	Active	High
Spencer, MA. in Spencer State Forest. Fire is 9 acres and 80% contained. Burning deep into organic soils. Many resources from local towns with DCR Fire made good progress.								
Spencer State Forest								

**TACTICS AND STRATEGIES:** DCR will continue operations of the Fire Tower network once dry conditions return to provide early detection of any fires. Early detection and quick response are important in keeping fires small and manageable in these drought conditions. All fires with a delayed response can spread quickly in the current dry conditions. Full suppression of these fires will require labor intensive operations. DCR can provide guidance for our local fire department partners on all fires for the most effective tactics and incident management if needed.

**CAUSES:** Almost all fire activity is human caused, although drought conditions are increasing the potential for lightning caused fires if thunderstorms are in the area. Numerous fires have been traced back to abandoned campfires not properly extinguished for the present drought conditions.



**7 Day Wildfire Activity Since October 29th**



**Moose Meadow Briefing Map**